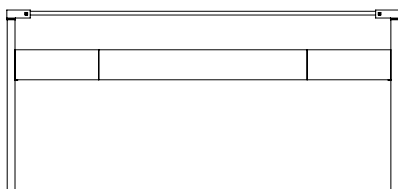
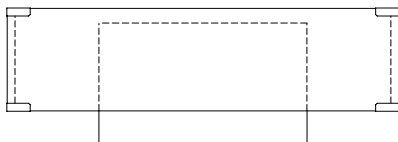




Shown: Brass Matt / Oak Pure / Optiwhite Glass

Model: Pioneer Orson T53L



Product type
Console

Year of Design
2009

Designer
Peter Ghyczy

Description
The twin frames are constructed of 3 x 3 square tubes and secured to the tabletop by cast metal details. Special feature is a solid wooden drawer. The strong construction makes this table versatile, fitting every interior with timeless elegance.

Materials Frame
C - MA - MB - MG - MM - R - RG - RM

Materials Cast Part
AG - AM - C - KG - MA - MB - MG
MM - R

Glas
B - M - O

Wood
Oak, Cherry and Walnut in different finishes - See Pdf 'Wood Samples'

Dimensions
L 40 x W 150 x H 72
Different sizes available

Dimensions Cast Part
L 9 x W 3 x H 3

Product Weight
x

Packaging
x

Country of Origin
The Netherlands

Delivery Time
8 weeks