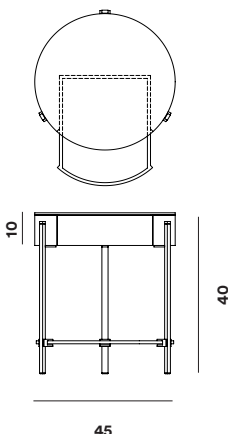


Shown: Copper Gloss / RAL / Clear Glass

Model: Pioneer Alice T79L



Product type
Sidetable

Year of Design
2012

Designer
Peter Ghyczy

Description
The T79 is versatile as it is modest. Three stainless steel legs are secured to the glass top by cast metal details. To be ordered in different heights and arranged as nesting tables. The 10 mm glass top is available in clear, 'optiwhite', tinted or satin finish.

Materials Frame
C - KG - MA - MB - MG - MM - R -
RG - RM

Materials Cast Part
AG - AM - C - KG - MA - MB - MG -
MM - R

Wood

EIK 2448 M - EIK 2448 ZG -
EIK 2557 M EIK LA M - EIK NA M EIK
NA ZG - EIK PU M - EIK WE M - EIK
WE ZG - EIK WW M RAL COLORS

Glas

B - G - M - O

Dimensions

D 45 x H 40

Product Weight

10,5 KG

Packaging

x

Country of Origin

The Netherlands

Delivery Time

8 weeks